

Floor Boxes Furniture and Work Surface Connectivity Boxes



Square Flush Mount Boxes

Description	Finish	Dimensions	Catalog Number
2-Gang Square Flush Mount Box with Cover.	Black	6.5"L x 6.5"W x 3.75"H	HBLSHA2
2-Gang Square Flush Mount Box with Cover.	Stainless Steel	6.5"L x 6.5"W x 3.75"H	HBLSHA2BSS



HBLSHA2

Rectangular Flush Mount Boxes

Description	Finish	Dimensions	Catalog Number
2-Gang Rectangular Flush Mount with Cover.	Black	10.75"L x 4.06"W x 3.5"H	HBLPHA2
2-Gang Rectangular Flush Mount with Cover.	Stainless Steel	10.75"L x 4.06"W x 3.5"H	HBLPHA2BSS
4-Gang Rectangular Flush Mount with Cover.	Black	10.75"L x 6.5"W x 3.5"H	HBLPHA4
4-Gang Rectangular Flush Mount with Cover.	Stainless Steel	10.75"L x 6.5"W x 3.5"H	HBLPHA4BSS



HBLPHA2

Surface Mount Boxes

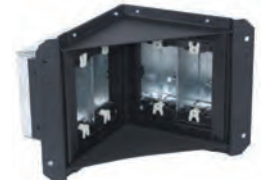
Description	Finish	Dimensions	Catalog Number
2-Gang Surface Mount Box.	Black	4.19"L x 4.81"W x 2.44"H	HBLCON2
3-Gang Surface Mount Box.	Black	6.19"L x 4.81"W x 2.44"H	HBLCON3



HBLCON2

Recessed Mount Boxes

Description	Finish	Dimensions	Catalog Number
2-Gang Recessed Mount.	Black	10.25"L x 7.0"W x 5.88"H	HBLMIR2
4-Gang Recessed Mount.	Black	31.0"L x 10.25"W x 5.88"H	HBLMIR4



HBLMIR2

Under Desk Mount Boxes

Description	Finish	Dimensions	Catalog Number
2-Gang Under Desk Mount.	Black	9.19"L x 3.0"W x 2.88"H	HBLMAR2
3-Gang Under Desk Mount.	Black	13.69"L x 3.0"W x 2.88"H	HBLMAR3



HBLMAR2

Hubbell – Screw Type Face Plates

Dimensions	HBLST302SBK	HBLDE301SBK	HBLBL300SBK	HBLIMFSBK	HBL317SBK
<p>Typical</p>					
	Duplex	Style Line® Decorator Opening	Blank	3-Unit Hubbell iSTATION (See Network Wiring section for module options)	Hubbell 6-Port

Note: See page O-30 for open systems screw type face plates.

Table Top Boxes

Low Voltage Only

Description	Finish	Dimensions	Catalog Number
Table Top box; 2 inch diameter hole; (1) keystone opening; Keystone modules sold separately.	Black Anod. Alum. Clear Anod. Alum. Solid Brass	2.19" Diameter	TTBKSBK TTBKSAL TTBKSBR
Table Top box; 2 inch diameter hole; (1) XLR microphone jack installed.	Black Anod. Alum. Clear Anod. Alum. Solid Brass	2.19" Diameter	TTBXLRBK TTBXLRAL TTBXLRR



TTBKSBK



TTBXLRBK

Pre-Wired Dual-Service

Description	Finish	Dimensions	Catalog Number
Table Top box; 3.5 inch diameter hole; (1) pre-wired 15A outlet with 9 foot power supply cord; (1) 3.5mm screw terminal audio jack; (1) 15-pin gender changer F/F; (2) keystone openings; Keystone modules sold separately.	Black Anod. Alum. Clear Anod. Alum. Solid Brass	3.88" Diameter	TTBDS1BK TTBDS1AL TTBDS1BR
Table Top box; 3.5 inch diameter hole; (2) pre-wired 15A outlets with 9 foot power supply cord; (2) keystone openings; Keystone modules sold separately.	Black Anod. Alum. Clear Anod. Alum. Solid Brass	3.88" Diameter	TTBDS2BK TTBDS2AL TTBDS2BR



TTBDS1BK



TTBDS2BK

Note: See section A for power devices and section W for datacom accessories.

Dimensions in Inches (mm)